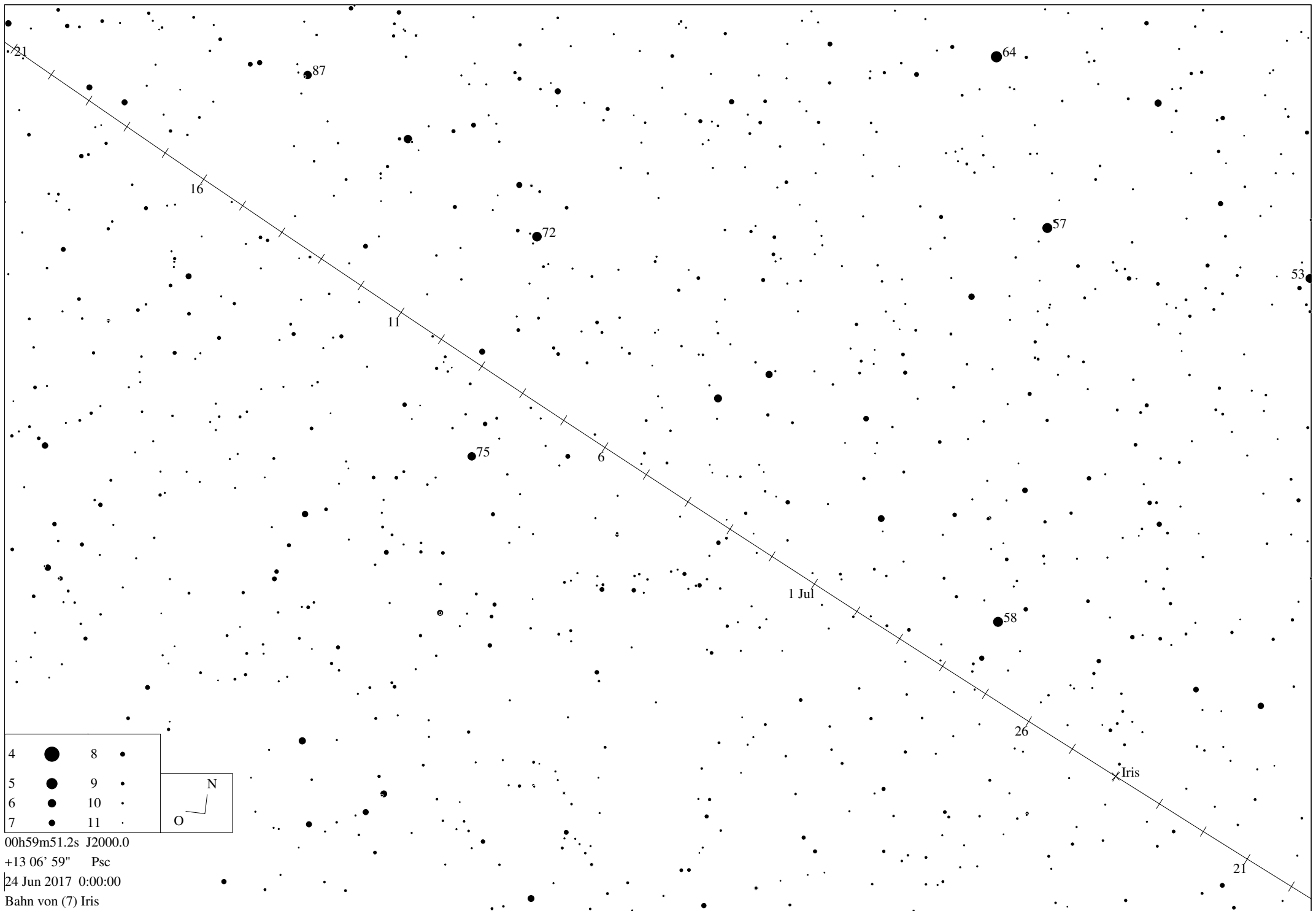


00h21m27.0s J2000.0

+07 49' 51" Psc

1 Jun 2017 0:00:00

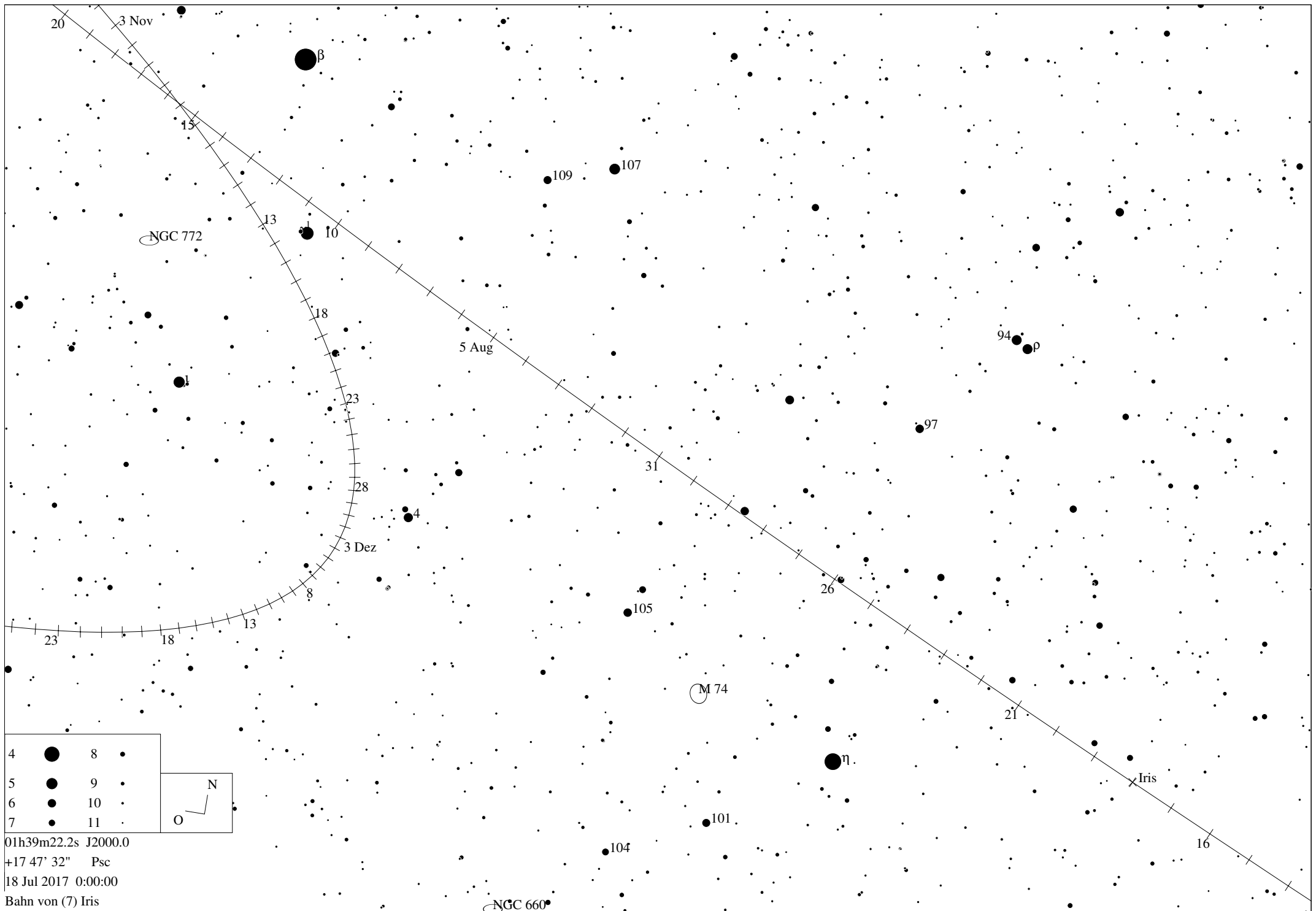
Bahn von (7) Iris



4	●	8	●
5	●	9	●
6	●	10	●
7	●	11	●

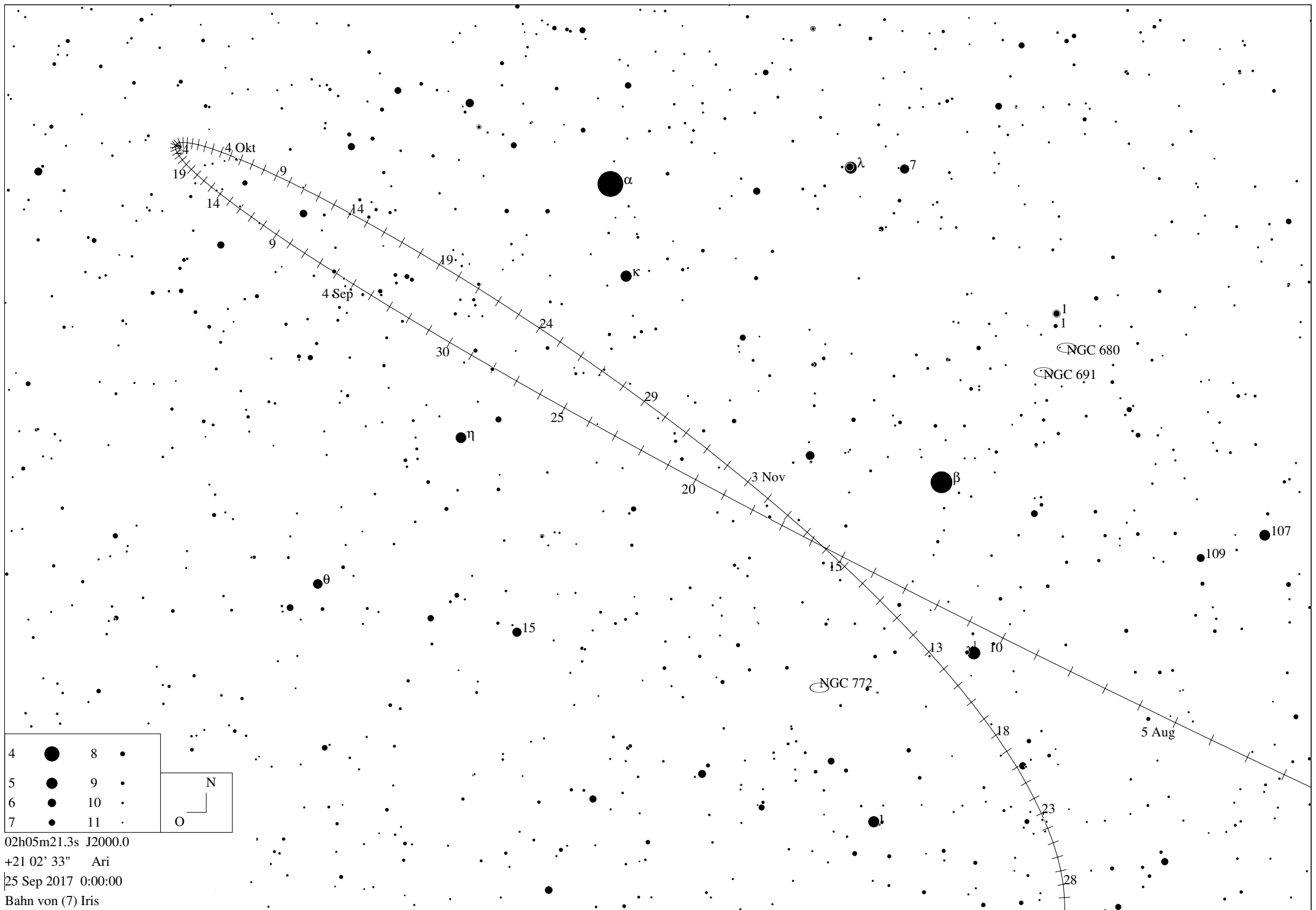
N
 O

00h59m51.2s J2000.0
 +13 06' 59" Psc
 24 Jun 2017 0:00:00
 Bahn von (7) Iris

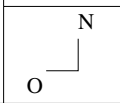


01h39m22.2s J2000.0
+17 47' 32" Psc
18 Jul 2017 0:00:00
Bahn von (7) Iris

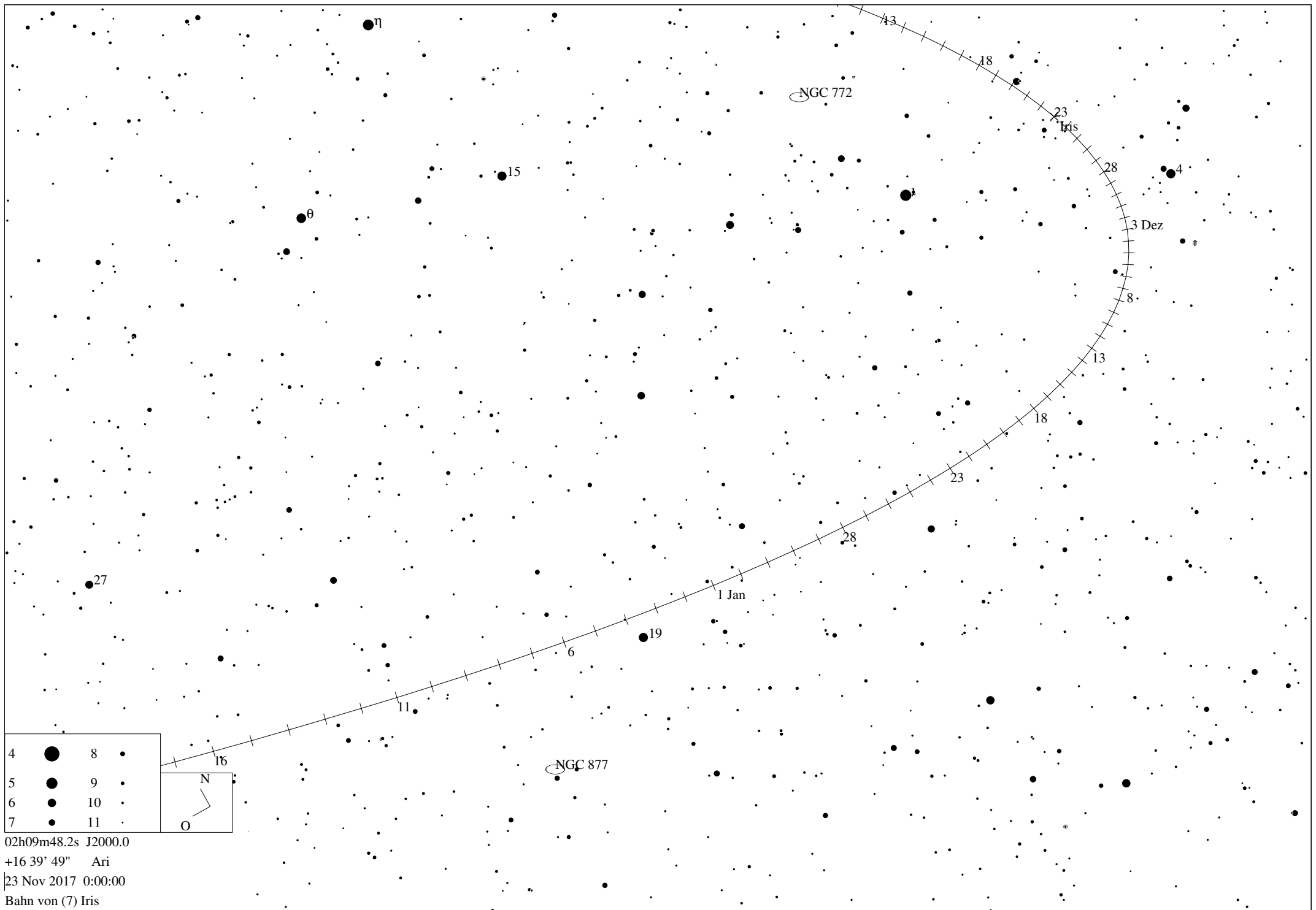
NGC 660

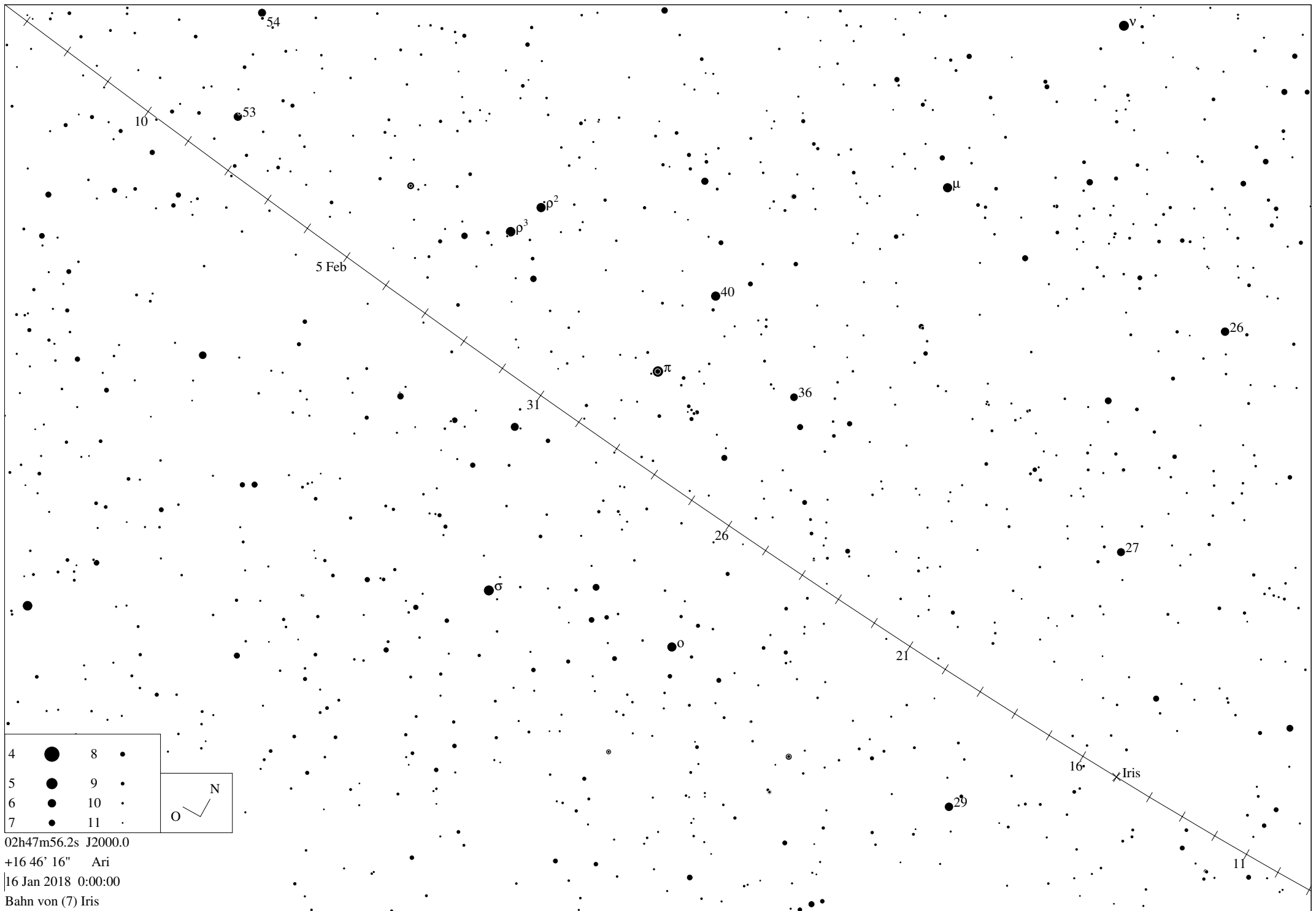


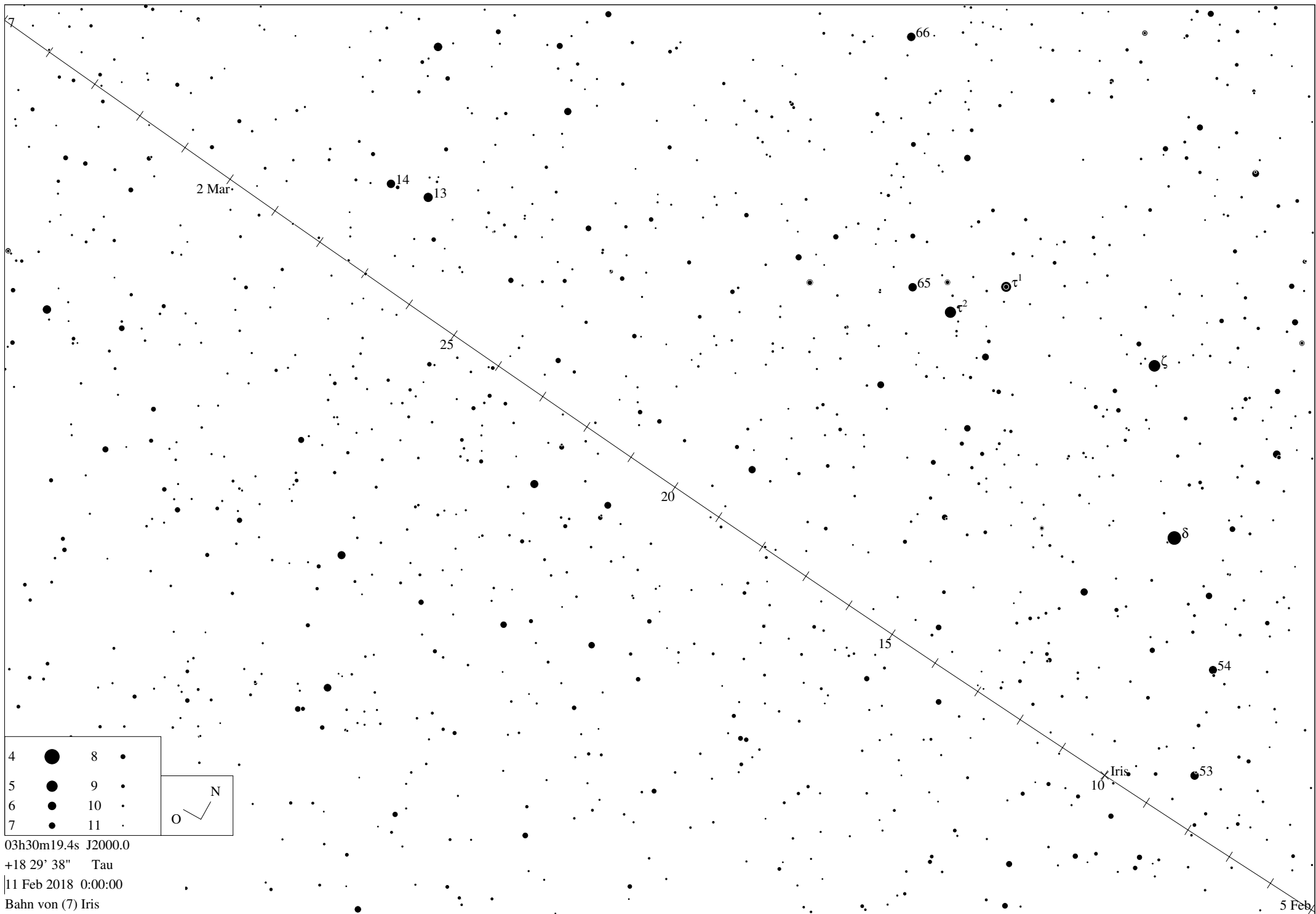
4	●	8	●
5	●	9	●
6	●	10	●
7	●	11	●

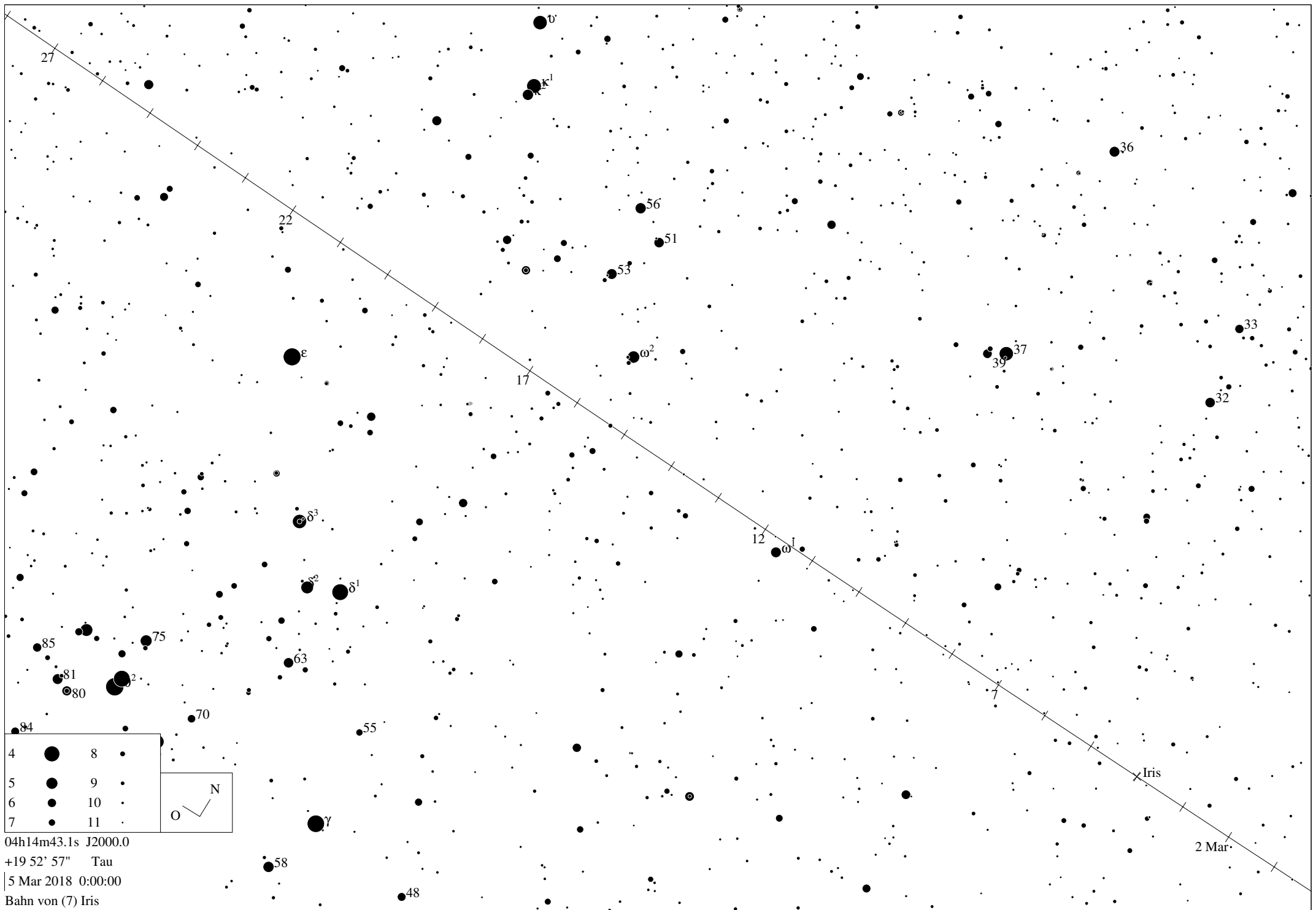


02h05m21.3s J2000.0
 +21 02' 33" Ari
 25 Sep 2017 0:00:00
 Bahn von (7) Iris

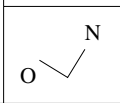




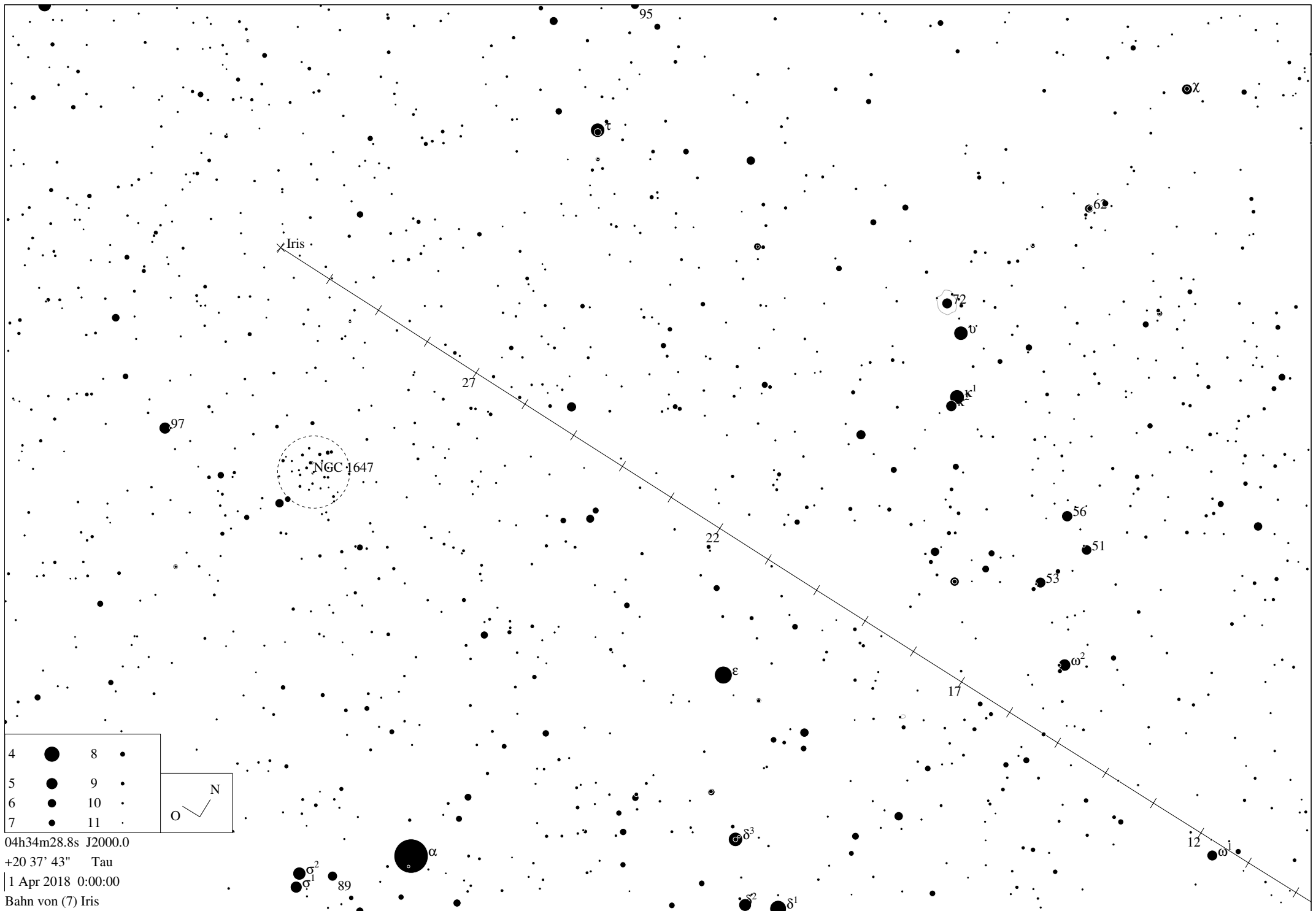




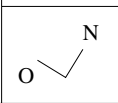
4		8	
5		9	
6		10	
7		11	



04h14m43.1s J2000.0
 +19 52' 57" Tau
 5 Mar 2018 0:00:00
 Bahn von (7) Iris



4	●	8	●
5	●	9	●
6	●	10	●
7	●	11	●



04h34m28.8s J2000.0
 +20 37' 43" Tau
 1 Apr 2018 0:00:00
 Bahn von (7) Iris

Ephemeride des Kleinplaneten (7) Iris

Datum	RA	Deklination	r	delta	mag	Elong	Phase	Höhe	Az.	Gesch.	PA	Stb
-----	--	-----	-	-----	---	-----	-----	-----	-----	-----	-----	-----
1 Jun 2017	00h03m19.60s	+05 47' 07.0"	2.0821	2.2477	10.1	67.5	26.7	0.03	80.48	72.23	63.1	Psc
2 Jun 2017	00h05m03.09s	+06 00' 10.2"	2.0796	2.2355	10.1	68.0	26.9	0.54	80.78	72.10	63.0	Psc
3 Jun 2017	00h06m46.43s	+06 13' 12.6"	2.0772	2.2233	10.0	68.4	27.0	1.05	81.08	71.98	63.0	Psc
4 Jun 2017	00h08m29.62s	+06 26' 14.3"	2.0747	2.2111	10.0	68.9	27.1	1.56	81.39	71.85	63.0	Psc
5 Jun 2017	00h10m12.66s	+06 39' 15.1"	2.0723	2.1989	10.0	69.4	27.3	2.07	81.69	71.72	63.0	Psc
6 Jun 2017	00h11m55.54s	+06 52' 15.1"	2.0699	2.1867	10.0	69.9	27.4	2.59	81.99	71.59	62.9	Psc
7 Jun 2017	00h13m38.27s	+07 05' 14.2"	2.0674	2.1745	10.0	70.4	27.5	3.10	82.30	71.46	62.9	Psc
8 Jun 2017	00h15m20.84s	+07 18' 12.3"	2.0650	2.1623	10.0	70.8	27.7	3.61	82.60	71.32	62.9	Psc
9 Jun 2017	00h17m03.26s	+07 31' 09.3"	2.0626	2.1501	10.0	71.3	27.8	4.12	82.90	71.18	62.9	Psc
10 Jun 2017	00h18m45.51s	+07 44' 05.2"	2.0602	2.1378	10.0	71.8	27.9	4.63	83.21	71.03	62.9	Psc
11 Jun 2017	00h20m27.59s	+07 56' 59.9"	2.0577	2.1256	10.0	72.3	28.0	5.14	83.51	70.88	62.8	Psc
12 Jun 2017	00h22m09.51s	+08 09' 53.4"	2.0553	2.1134	9.9	72.7	28.2	5.66	83.82	70.73	62.8	Psc
13 Jun 2017	00h23m51.25s	+08 22' 45.6"	2.0529	2.1011	9.9	73.2	28.3	6.17	84.12	70.57	62.8	Psc
14 Jun 2017	00h25m32.82s	+08 35' 36.4"	2.0506	2.0889	9.9	73.7	28.4	6.68	84.43	70.41	62.8	Psc
15 Jun 2017	00h27m14.20s	+08 48' 25.7"	2.0482	2.0766	9.9	74.2	28.5	7.19	84.73	70.24	62.8	Psc
16 Jun 2017	00h28m55.40s	+09 01' 13.5"	2.0458	2.0644	9.9	74.7	28.6	7.71	85.04	70.07	62.8	Psc
17 Jun 2017	00h30m36.40s	+09 13' 59.7"	2.0434	2.0521	9.9	75.2	28.7	8.22	85.34	69.89	62.7	Psc
18 Jun 2017	00h32m17.20s	+09 26' 44.3"	2.0411	2.0398	9.9	75.7	28.8	8.73	85.65	69.71	62.7	Psc
19 Jun 2017	00h33m57.79s	+09 39' 27.0"	2.0387	2.0276	9.9	76.1	28.9	9.25	85.96	69.52	62.7	Psc
20 Jun 2017	00h35m38.16s	+09 52' 08.0"	2.0364	2.0153	9.8	76.6	29.0	9.76	86.27	69.32	62.7	Psc
21 Jun 2017	00h37m18.31s	+10 04' 46.9"	2.0341	2.0031	9.8	77.1	29.1	10.28	86.58	69.11	62.7	Psc
22 Jun 2017	00h38m58.22s	+10 17' 23.9"	2.0317	1.9908	9.8	77.6	29.2	10.79	86.89	68.90	62.7	Psc
23 Jun 2017	00h40m37.89s	+10 29' 58.7"	2.0294	1.9786	9.8	78.1	29.3	11.30	87.20	68.68	62.7	Psc
24 Jun 2017	00h42m17.31s	+10 42' 31.4"	2.0271	1.9663	9.8	78.6	29.4	11.82	87.51	68.46	62.7	Psc
25 Jun 2017	00h43m56.48s	+10 55' 01.7"	2.0248	1.9541	9.8	79.1	29.5	12.33	87.83	68.23	62.6	Psc
26 Jun 2017	00h45m35.37s	+11 07' 29.6"	2.0225	1.9418	9.8	79.6	29.6	12.85	88.14	67.99	62.6	Psc
27 Jun 2017	00h47m14.00s	+11 19' 55.1"	2.0202	1.9296	9.8	80.1	29.7	13.36	88.46	67.75	62.6	Psc
28 Jun 2017	00h48m52.34s	+11 32' 18.0"	2.0179	1.9174	9.7	80.6	29.8	13.88	88.78	67.50	62.6	Psc
29 Jun 2017	00h50m30.40s	+11 44' 38.3"	2.0157	1.9052	9.7	81.1	29.9	14.39	89.10	67.25	62.6	Psc
30 Jun 2017	00h52m08.18s	+11 56' 55.9"	2.0134	1.8930	9.7	81.6	30.0	14.91	89.42	66.99	62.6	Psc
1 Jul 2017	00h53m45.65s	+12 09' 10.8"	2.0112	1.8808	9.7	82.1	30.0	15.42	89.74	66.73	62.6	Psc
2 Jul 2017	00h55m22.82s	+12 21' 22.8"	2.0089	1.8686	9.7	82.6	30.1	15.94	90.06	66.46	62.6	Psc
3 Jul 2017	00h56m59.68s	+12 33' 31.9"	2.0067	1.8565	9.7	83.1	30.2	16.46	90.39	66.18	62.6	Psc
4 Jul 2017	00h58m36.23s	+12 45' 38.0"	2.0045	1.8443	9.7	83.6	30.3	16.97	90.71	65.90	62.6	Psc
5 Jul 2017	01h00m12.45s	+12 57' 41.1"	2.0022	1.8322	9.6	84.1	30.3	17.49	91.04	65.62	62.6	Psc
6 Jul 2017	01h01m48.33s	+13 09' 41.0"	2.0000	1.8201	9.6	84.6	30.4	18.00	91.37	65.33	62.6	Psc
7 Jul 2017	01h03m23.88s	+13 21' 37.8"	1.9978	1.8080	9.6	85.1	30.5	18.52	91.71	65.03	62.6	Psc
8 Jul 2017	01h04m59.07s	+13 33' 31.3"	1.9957	1.7959	9.6	85.7	30.5	19.03	92.04	64.72	62.6	Psc
9 Jul 2017	01h06m33.91s	+13 45' 21.4"	1.9935	1.7838	9.6	86.2	30.6	19.55	92.38	64.41	62.5	Psc
10 Jul 2017	01h08m08.37s	+13 57' 08.2"	1.9913	1.7718	9.6	86.7	30.6	20.07	92.72	64.09	62.5	Psc
11 Jul 2017	01h09m42.44s	+14 08' 51.4"	1.9892	1.7598	9.6	87.2	30.7	20.58	93.06	63.76	62.5	Psc
12 Jul 2017	01h11m16.12s	+14 20' 31.1"	1.9870	1.7478	9.5	87.7	30.7	21.10	93.40	63.43	62.5	Psc
13 Jul 2017	01h12m49.40s	+14 32' 07.1"	1.9849	1.7358	9.5	88.3	30.8	21.61	93.75	63.08	62.5	Psc
14 Jul 2017	01h14m22.25s	+14 43' 39.4"	1.9827	1.7238	9.5	88.8	30.8	22.13	94.10	62.73	62.5	Psc
15 Jul 2017	01h15m54.66s	+14 55' 07.8"	1.9806	1.7118	9.5	89.3	30.9	22.65	94.45	62.36	62.5	Psc
16 Jul 2017	01h17m26.62s	+15 06' 32.3"	1.9785	1.6999	9.5	89.9	30.9	23.16	94.81	61.99	62.5	Psc
17 Jul 2017	01h18m58.11s	+15 17' 52.8"	1.9764	1.6880	9.5	90.4	30.9	23.68	95.17	61.60	62.5	Psc
18 Jul 2017	01h20m29.11s	+15 29' 09.1"	1.9743	1.6761	9.4	90.9	31.0	24.20	95.53	61.20	62.5	Psc
19 Jul 2017	01h21m59.61s	+15 40' 21.2"	1.9723	1.6643	9.4	91.5	31.0	24.71	95.90	60.79	62.4	Psc
20 Jul 2017	01h23m29.58s	+15 51' 28.9"	1.9702	1.6524	9.4	92.0	31.0	25.23	96.26	60.37	62.4	Psc
21 Jul 2017	01h24m59.01s	+16 02' 32.2"	1.9682	1.6406	9.4	92.6	31.0	25.75	96.64	59.94	62.4	Psc
22 Jul 2017	01h26m27.88s	+16 13' 30.9"	1.9661	1.6288	9.4	93.1	31.1	26.27	97.01	59.49	62.4	Psc
23 Jul 2017	01h27m56.17s	+16 24' 25.0"	1.9641	1.6171	9.4	93.7	31.1	26.78	97.39	59.03	62.4	Psc
24 Jul 2017	01h29m23.86s	+16 35' 14.2"	1.9621	1.6054	9.3	94.2	31.1	27.30	97.78	58.57	62.4	Psc
25 Jul 2017	01h30m50.94s	+16 45' 58.5"	1.9601	1.5937	9.3	94.8	31.1	27.82	98.17	58.09	62.3	Psc
26 Jul 2017	01h32m17.39s	+16 56' 37.8"	1.9581	1.5820	9.3	95.4	31.1	28.34	98.56	57.60	62.3	Psc
27 Jul 2017	01h33m43.19s	+17 07' 12.0"	1.9561	1.5704	9.3	95.9	31.1	28.85	98.96	57.10	62.3	Psc
28 Jul 2017	01h35m08.33s	+17 17' 41.0"	1.9541	1.5588	9.3	96.5	31.1	29.37	99.36	56.59	62.3	Psc
29 Jul 2017	01h36m32.79s	+17 28' 04.7"	1.9522	1.5472	9.2	97.1	31.1	29.89	99.77	56.07	62.3	Psc
30 Jul 2017	01h37m56.55s	+17 38' 23.1"	1.9502	1.5357	9.2	97.6	31.1	30.41	100.19	55.54	62.2	Psc
31 Jul 2017	01h39m19.59s	+17 48' 35.9"	1.9483	1.5242	9.2	98.2	31.0	30.93	100.61	55.00	62.2	Psc
1 Aug 2017	01h40m41.90s	+17 58' 43.2"	1.9464	1.5128	9.2	98.8	31.0	31.45	101.03	54.45	62.2	Psc
2 Aug 2017	01h42m03.46s	+18 08' 44.8"	1.9445	1.5014	9.2	99.4	31.0	31.97	101.46	53.88	62.1	Psc
3 Aug 2017	01h43m24.24s	+18 18' 40.7"	1.9426	1.4900	9.1	100.0	31.0	32.49	101.90	53.31	62.1	Psc
4 Aug 2017	01h44m44.23s	+18 28' 30.7"	1.9407	1.4787	9.1	100.6	30.9	33.00	102.35	52.72	62.1	Psc
5 Aug 2017	01h46m03.41s	+18 38' 14.7"	1.9388	1.4674	9.1	101.2	30.9	33.52	102.80	52.12	62.0	Psc
6 Aug 2017	01h47m21.74s	+18 47' 52.7"	1.9369	1.4562	9.1	101.8	30.8	34.04	103.25	51.51	62.0	Ari
7 Aug 2017	01h48m39.22s	+18 57' 24.5"	1.9351	1.4450	9.1	102.4	30.8	34.56	103.72	50.88	61.9	Ari
8 Aug 2017	01h49m55.81s	+19 06' 50.1"	1.9333	1.4338	9.0	103.0	30.7	35.08	104.19	50.24	61.9	Ari
9 Aug 2017	01h51m11.49s	+19 16' 09.3"	1.9315	1.4227	9.0	103.6	30.7	35.60	104.67	49.58	61.8	Ari
10 Aug 2017	01h52m26.23s	+19 25' 22.0"	1.9297	1.4117	9.0	104.2	30.6	36.12	105.16	48.91	61.8	Ari
11 Aug 2017	01h53m40.00s	+19 34' 28.1"	1.9279	1.4007	9.0	104.8	30.5	36.64	105.66	48.22	61.7	Ari
12 Aug 2017	01h54m52.79s	+19 43' 27.4"	1.9261	1.3897	9.0	105.5	30.5	37.17	106.16	47.52	61.6	Ari
13 Aug 2017	01h56m04.54s	+19 52' 19.8"	1.9243	1.3788	8.9	106.1	30.4	37.69	106.68	46.79	61.6	Ari

Ephemeride des Kleinplaneten (7) Iris

Datum	RA	Deklination	r	delta	mag	Elong	Phase	Höhe	Az.	Gesch.	PA	Stb
-----	--	-----	-	-----	---	-----	-----	-----	-----	-----	-----	-----
14 Aug 2017	01h57m15.25s	+20 01' 05.3"	1.9226	1.3680	8.9	106.8	30.3	38.21	107.20	46.05	61.5	Ari
15 Aug 2017	01h58m24.86s	+20 09' 43.6"	1.9208	1.3572	8.9	107.4	30.2	38.73	107.74	45.29	61.4	Ari
16 Aug 2017	01h59m33.35s	+20 18' 14.5"	1.9191	1.3464	8.9	108.0	30.1	39.25	108.28	44.51	61.3	Ari
17 Aug 2017	02h00m40.69s	+20 26' 38.0"	1.9174	1.3357	8.9	108.7	30.0	39.77	108.84	43.72	61.2	Ari
18 Aug 2017	02h01m46.84s	+20 34' 53.8"	1.9157	1.3251	8.8	109.4	29.9	40.29	109.40	42.90	61.1	Ari
19 Aug 2017	02h02m51.77s	+20 43' 01.8"	1.9140	1.3145	8.8	110.0	29.8	40.81	109.98	42.06	61.0	Ari
20 Aug 2017	02h03m55.44s	+20 51' 01.8"	1.9124	1.3040	8.8	110.7	29.7	41.33	110.58	41.21	60.8	Ari
21 Aug 2017	02h04m57.83s	+20 58' 53.6"	1.9107	1.2935	8.8	111.4	29.5	41.85	111.18	40.34	60.7	Ari
22 Aug 2017	02h05m58.91s	+21 06' 37.1"	1.9091	1.2831	8.7	112.1	29.4	42.37	111.80	39.45	60.6	Ari
23 Aug 2017	02h06m58.64s	+21 14' 12.1"	1.9075	1.2728	8.7	112.8	29.3	42.89	112.43	38.54	60.4	Ari
24 Aug 2017	02h07m56.99s	+21 21' 38.5"	1.9059	1.2626	8.7	113.4	29.1	43.41	113.08	37.61	60.3	Ari
25 Aug 2017	02h08m53.93s	+21 28' 56.0"	1.9043	1.2524	8.7	114.2	29.0	43.93	113.74	36.67	60.1	Ari
26 Aug 2017	02h09m49.44s	+21 36' 04.6"	1.9027	1.2423	8.6	114.9	28.8	44.45	114.42	35.72	59.9	Ari
27 Aug 2017	02h10m43.49s	+21 43' 04.0"	1.9011	1.2322	8.6	115.6	28.6	44.97	115.11	34.75	59.7	Ari
28 Aug 2017	02h11m36.04s	+21 49' 54.1"	1.8996	1.2223	8.6	116.3	28.5	45.49	115.82	33.76	59.5	Ari
29 Aug 2017	02h12m27.07s	+21 56' 34.7"	1.8981	1.2124	8.6	117.0	28.3	46.01	116.55	32.75	59.3	Ari
30 Aug 2017	02h13m16.55s	+22 03' 05.7"	1.8965	1.2026	8.5	117.8	28.1	46.52	117.30	31.73	59.0	Ari
31 Aug 2017	02h14m04.44s	+22 09' 26.9"	1.8951	1.1929	8.5	118.5	27.9	47.04	118.07	30.69	58.8	Ari
1 Sep 2017	02h14m50.72s	+22 15' 38.1"	1.8936	1.1832	8.5	119.3	27.7	47.55	118.85	29.63	58.5	Ari
2 Sep 2017	02h15m35.36s	+22 21' 39.1"	1.8921	1.1737	8.5	120.0	27.5	48.06	119.66	28.56	58.2	Ari
3 Sep 2017	02h16m18.32s	+22 27' 29.8"	1.8907	1.1642	8.4	120.8	27.3	48.57	120.49	27.47	57.8	Ari
4 Sep 2017	02h16m59.57s	+22 33' 09.9"	1.8892	1.1548	8.4	121.5	27.1	49.08	121.35	26.36	57.5	Ari
5 Sep 2017	02h17m39.09s	+22 38' 39.3"	1.8878	1.1455	8.4	122.3	26.8	49.58	122.22	25.23	57.1	Ari
6 Sep 2017	02h18m16.83s	+22 43' 57.7"	1.8864	1.1363	8.4	123.1	26.6	50.09	123.12	24.09	56.6	Ari
7 Sep 2017	02h18m52.77s	+22 49' 05.0"	1.8850	1.1272	8.3	123.9	26.3	50.59	124.05	22.93	56.1	Ari
8 Sep 2017	02h19m26.88s	+22 54' 00.9"	1.8836	1.1182	8.3	124.7	26.1	51.08	125.01	21.75	55.6	Ari
9 Sep 2017	02h19m59.11s	+22 58' 45.2"	1.8823	1.1093	8.3	125.5	25.8	51.58	125.99	20.55	54.9	Ari
10 Sep 2017	02h20m29.44s	+23 03' 17.6"	1.8810	1.1005	8.3	126.3	25.6	52.07	127.00	19.34	54.2	Ari
11 Sep 2017	02h20m57.83s	+23 07' 37.9"	1.8796	1.0917	8.2	127.2	25.3	52.55	128.04	18.11	53.4	Ari
12 Sep 2017	02h21m24.25s	+23 11' 45.9"	1.8783	1.0831	8.2	128.0	25.0	53.03	129.11	16.86	52.5	Ari
13 Sep 2017	02h21m48.66s	+23 15' 41.2"	1.8771	1.0746	8.2	128.8	24.7	53.51	130.22	15.59	51.4	Ari
14 Sep 2017	02h22m11.05s	+23 19' 23.6"	1.8758	1.0662	8.2	129.7	24.4	53.98	131.36	14.32	50.2	Ari
15 Sep 2017	02h22m31.37s	+23 22' 52.8"	1.8745	1.0580	8.1	130.5	24.1	54.44	132.53	13.03	48.6	Ari
16 Sep 2017	02h22m49.61s	+23 26' 08.5"	1.8733	1.0498	8.1	131.4	23.7	54.90	133.74	11.74	46.8	Ari
17 Sep 2017	02h23m05.73s	+23 29' 10.4"	1.8721	1.0417	8.1	132.3	23.4	55.34	134.99	10.44	44.5	Ari
18 Sep 2017	02h23m19.73s	+23 31' 58.3"	1.8709	1.0338	8.0	133.2	23.1	55.79	136.28	9.16	41.6	Ari
19 Sep 2017	02h23m31.59s	+23 34' 31.9"	1.8697	1.0260	8.0	134.1	22.7	56.22	137.61	7.89	37.7	Ari
20 Sep 2017	02h23m41.29s	+23 36' 50.8"	1.8685	1.0183	8.0	135.0	22.4	56.64	138.98	6.66	32.4	Ari
21 Sep 2017	02h23m48.83s	+23 38' 55.0"	1.8674	1.0108	8.0	135.9	22.0	57.05	140.39	5.50	24.9	Ari
22 Sep 2017	02h23m54.20s	+23 40' 44.0"	1.8663	1.0034	7.9	136.8	21.6	57.45	141.84	4.47	13.6	Ari
23 Sep 2017	02h23m57.39s	+23 42' 17.7"	1.8652	0.9961	7.9	137.7	21.2	57.84	143.34	3.70	356.8	Ari
24 Sep 2017	02h23m58.42s	+23 43' 35.9"	1.8641	0.9890	7.9	138.7	20.8	58.21	144.88	3.37	334.2	Ari
25 Sep 2017	02h23m57.27s	+23 44' 38.2"	1.8630	0.9820	7.8	139.6	20.4	58.57	146.46	3.60	311.0	Ari
26 Sep 2017	02h23m53.96s	+23 45' 24.5"	1.8619	0.9752	7.8	140.6	20.0	58.92	148.10	4.31	292.9	Ari
27 Sep 2017	02h23m48.51s	+23 45' 54.7"	1.8609	0.9685	7.8	141.5	19.6	59.25	149.77	5.30	280.8	Ari
28 Sep 2017	02h23m40.91s	+23 46' 08.4"	1.8599	0.9619	7.7	142.5	19.1	59.56	151.50	6.45	272.6	Ari
29 Sep 2017	02h23m31.18s	+23 46' 05.5"	1.8589	0.9555	7.7	143.5	18.7	59.85	153.26	7.68	266.9	Ari
30 Sep 2017	02h23m19.35s	+23 45' 45.8"	1.8579	0.9493	7.7	144.5	18.3	60.12	155.08	8.95	262.8	Ari
1 Okt 2017	02h23m05.43s	+23 45' 09.2"	1.8569	0.9432	7.7	145.5	17.8	60.38	156.93	10.25	259.6	Ari
2 Okt 2017	02h22m49.45s	+23 44' 15.4"	1.8560	0.9373	7.6	146.5	17.3	60.61	158.83	11.55	257.1	Ari
3 Okt 2017	02h22m31.44s	+23 43' 04.5"	1.8550	0.9316	7.6	147.5	16.9	60.81	160.77	12.86	255.1	Ari
4 Okt 2017	02h22m11.42s	+23 41' 36.2"	1.8541	0.9260	7.6	148.5	16.4	61.00	162.75	14.17	253.4	Ari
5 Okt 2017	02h21m49.44s	+23 39' 50.4"	1.8532	0.9206	7.5	149.5	15.9	61.15	164.76	15.46	252.0	Ari
6 Okt 2017	02h21m25.53s	+23 37' 47.0"	1.8524	0.9153	7.5	150.6	15.4	61.28	166.81	16.75	250.7	Ari
7 Okt 2017	02h20m59.72s	+23 35' 26.0"	1.8515	0.9103	7.5	151.6	14.9	61.39	168.89	18.03	249.6	Ari
8 Okt 2017	02h20m32.06s	+23 32' 47.2"	1.8507	0.9054	7.4	152.6	14.4	61.46	170.99	19.28	248.6	Ari
9 Okt 2017	02h20m02.60s	+23 29' 50.7"	1.8499	0.9007	7.4	153.7	13.9	61.51	173.12	20.52	247.7	Ari
10 Okt 2017	02h19m31.38s	+23 26' 36.3"	1.8491	0.8962	7.4	154.7	13.3	61.52	175.27	21.74	246.9	Ari
11 Okt 2017	02h18m58.47s	+23 23' 04.2"	1.8483	0.8919	7.4	155.8	12.8	61.51	177.43	22.93	246.1	Ari
12 Okt 2017	02h18m23.92s	+23 19' 14.2"	1.8475	0.8877	7.3	156.8	12.3	61.46	179.60	24.08	245.3	Ari
13 Okt 2017	02h17m47.81s	+23 15' 06.5"	1.8468	0.8838	7.3	157.9	11.7	61.39	181.78	25.21	244.6	Ari
14 Okt 2017	02h17m10.21s	+23 10' 41.1"	1.8461	0.8801	7.3	158.9	11.2	61.28	183.96	26.30	244.0	Ari
15 Okt 2017	02h16m31.19s	+23 05' 58.3"	1.8454	0.8765	7.2	160.0	10.7	61.14	186.14	27.34	243.3	Ari
16 Okt 2017	02h15m50.85s	+23 00' 58.1"	1.8447	0.8732	7.2	161.0	10.1	60.96	188.31	28.34	242.7	Ari
17 Okt 2017	02h15m09.28s	+22 55' 40.9"	1.8440	0.8700	7.2	162.1	9.6	60.76	190.47	29.29	242.0	Ari
18 Okt 2017	02h14m26.56s	+22 50' 06.9"	1.8434	0.8671	7.1	163.1	9.0	60.52	192.61	30.19	241.4	Ari
19 Okt 2017	02h13m42.81s	+22 44' 16.4"	1.8428	0.8644	7.1	164.1	8.5	60.26	194.73	31.03	240.8	Ari
20 Okt 2017	02h12m58.13s	+22 38' 09.9"	1.8422	0.8619	7.1	165.1	8.0	59.96	196.82	31.81	240.2	Ari
21 Okt 2017	02h12m12.62s	+22 31' 47.8"	1.8416	0.8596	7.0	166.1	7.5	59.64	198.89	32.53	239.6	Ari
22 Okt 2017	02h11m26.39s	+22 25' 10.5"	1.8410	0.8575	7.0	167.0	7.0	59.28	200.93	33.20	239.0	Ari
23 Okt 2017	02h10m39.57s	+22 18' 18.6"	1.8405	0.8557	7.0	167.9	6.5	58.90	202.93	33.79	238.4	Ari
24 Okt 2017	02h09m52.25s	+22 11' 12.6"	1.8400	0.8540	7.0	168.8	6.0	58.49	204.90	34.32	237.8	Ari
25 Okt 2017	02h09m04.56s	+22 03' 53.2"	1.8395	0.8526	6.9	169.6	5.6	58.05	206.83	34.79	237.2	Ari
26 Okt 2017	02h08m16.61s	+21 56' 20.9"	1.8390	0.8514	6.9	170.3	5.2	57.59	208.71	35.19	236.6	Ari

Ephemeride des Kleinplaneten (7) Iris

Datum	RA	Deklination	r	delta	mag	Elong	Phase	Höhe	Az.	Gesch.	PA	Stb
-----	--	-----	-	-----	---	-----	-----	-----	-----	-----	-----	---
27 Okt 2017	02h07m28.51s	+21 48' 36.6"	1.8385	0.8504	6.9	170.9	4.9	57.11	210.56	35.52	236.0	Ari
28 Okt 2017	02h06m40.39s	+21 40' 40.8"	1.8381	0.8497	6.9	171.3	4.7	56.61	212.37	35.78	235.4	Ari
29 Okt 2017	02h05m52.35s	+21 32' 34.3"	1.8377	0.8491	6.9	171.6	4.5	56.08	214.13	35.97	234.7	Ari
30 Okt 2017	02h05m04.51s	+21 24' 17.8"	1.8372	0.8488	6.9	171.8	4.4	55.53	215.85	36.09	234.1	Ari
31 Okt 2017	02h04m16.98s	+21 15' 52.3"	1.8369	0.8487	6.9	171.8	4.4	54.97	217.53	36.15	233.4	Ari
1 Nov 2017	02h03m29.87s	+21 07' 18.4"	1.8365	0.8489	6.9	171.6	4.5	54.39	219.17	36.14	232.7	Ari
2 Nov 2017	02h02m43.28s	+20 58' 36.9"	1.8362	0.8492	6.9	171.2	4.7	53.79	220.76	36.06	232.0	Ari
3 Nov 2017	02h01m57.32s	+20 49' 48.8"	1.8358	0.8498	6.9	170.7	5.0	53.17	222.31	35.92	231.3	Ari
4 Nov 2017	02h01m12.08s	+20 40' 54.8"	1.8355	0.8506	6.9	170.1	5.4	52.55	223.83	35.72	230.6	Ari
5 Nov 2017	02h00m27.67s	+20 31' 55.8"	1.8352	0.8516	6.9	169.3	5.7	51.91	225.30	35.46	229.8	Ari
6 Nov 2017	01h59m44.18s	+20 22' 52.6"	1.8350	0.8529	7.0	168.5	6.2	51.26	226.73	35.14	229.0	Ari
7 Nov 2017	01h59m01.71s	+20 13' 46.1"	1.8347	0.8544	7.0	167.6	6.6	50.60	228.13	34.76	228.2	Ari
8 Nov 2017	01h58m20.33s	+20 04' 37.1"	1.8345	0.8560	7.0	166.7	7.1	49.93	229.49	34.32	227.3	Ari
9 Nov 2017	01h57m40.15s	+19 55' 26.4"	1.8343	0.8579	7.0	165.8	7.6	49.25	230.81	33.83	226.4	Ari
10 Nov 2017	01h57m01.25s	+19 46' 14.9"	1.8341	0.8601	7.1	164.8	8.2	48.56	232.10	33.28	225.4	Ari
11 Nov 2017	01h56m23.72s	+19 37' 03.5"	1.8340	0.8624	7.1	163.7	8.7	47.87	233.36	32.68	224.4	Ari
12 Nov 2017	01h55m47.64s	+19 27' 53.0"	1.8338	0.8649	7.1	162.7	9.2	47.18	234.59	32.02	223.4	Ari
13 Nov 2017	01h55m13.10s	+19 18' 44.3"	1.8337	0.8677	7.2	161.7	9.8	46.48	235.78	31.32	222.2	Ari
14 Nov 2017	01h54m40.17s	+19 09' 38.3"	1.8336	0.8707	7.2	160.6	10.3	45.77	236.94	30.57	221.0	Ari
15 Nov 2017	01h54m08.92s	+19 00' 35.8"	1.8335	0.8739	7.2	159.5	10.9	45.07	238.08	29.78	219.7	Ari
16 Nov 2017	01h53m39.44s	+18 51' 37.5"	1.8335	0.8772	7.2	158.4	11.4	44.36	239.19	28.96	218.3	Ari
17 Nov 2017	01h53m11.78s	+18 42' 44.4"	1.8334	0.8808	7.3	157.4	12.0	43.65	240.27	28.09	216.9	Ari
18 Nov 2017	01h52m46.02s	+18 33' 57.3"	1.8334	0.8846	7.3	156.3	12.5	42.94	241.33	27.21	215.2	Ari
19 Nov 2017	01h52m22.19s	+18 25' 16.8"	1.8334	0.8886	7.3	155.2	13.1	42.23	242.36	26.29	213.5	Ari
20 Nov 2017	01h52m00.36s	+18 16' 43.7"	1.8334	0.8928	7.4	154.1	13.6	41.53	243.37	25.37	211.6	Ari
21 Nov 2017	01h51m40.58s	+18 08' 18.8"	1.8335	0.8972	7.4	153.1	14.1	40.82	244.35	24.43	209.6	Ari
22 Nov 2017	01h51m22.88s	+18 00' 02.7"	1.8335	0.9018	7.4	152.0	14.7	40.12	245.32	23.49	207.3	Ari
23 Nov 2017	01h51m07.30s	+17 51' 55.9"	1.8336	0.9066	7.5	150.9	15.2	39.42	246.26	22.56	204.9	Ari
24 Nov 2017	01h50m53.88s	+17 43' 59.2"	1.8337	0.9116	7.5	149.9	15.7	38.72	247.19	21.64	202.2	Ari
25 Nov 2017	01h50m42.64s	+17 36' 13.1"	1.8339	0.9167	7.5	148.8	16.2	38.03	248.09	20.75	199.3	Ari
26 Nov 2017	01h50m33.60s	+17 28' 38.0"	1.8340	0.9220	7.5	147.7	16.7	37.34	248.98	19.89	196.1	Ari
27 Nov 2017	01h50m26.78s	+17 21' 14.5"	1.8342	0.9276	7.6	146.7	17.2	36.66	249.85	19.08	192.6	Ari
28 Nov 2017	01h50m22.19s	+17 14' 02.9"	1.8344	0.9332	7.6	145.7	17.7	35.98	250.71	18.32	188.7	Ari
29 Nov 2017	01h50m19.84s	+17 07' 03.7"	1.8346	0.9391	7.6	144.6	18.1	35.31	251.54	17.64	184.6	Ari
30 Nov 2017	01h50m19.74s	+17 00' 17.3"	1.8348	0.9451	7.7	143.6	18.6	34.64	252.37	17.05	180.2	Ari
1 Dez 2017	01h50m21.89s	+16 53' 43.9"	1.8350	0.9513	7.7	142.6	19.1	33.98	253.18	16.55	175.4	Ari
2 Dez 2017	01h50m26.28s	+16 47' 23.7"	1.8353	0.9576	7.7	141.6	19.5	33.32	253.97	16.16	170.4	Ari
3 Dez 2017	01h50m32.90s	+16 41' 17.1"	1.8356	0.9641	7.7	140.6	19.9	32.68	254.76	15.89	165.2	Ari
4 Dez 2017	01h50m41.75s	+16 35' 24.2"	1.8359	0.9708	7.8	139.6	20.4	32.03	255.52	15.75	159.9	Ari
5 Dez 2017	01h50m52.81s	+16 29' 45.2"	1.8362	0.9776	7.8	138.6	20.8	31.40	256.28	15.73	154.5	Ari
6 Dez 2017	01h51m06.09s	+16 24' 20.2"	1.8366	0.9845	7.8	137.6	21.2	30.77	257.03	15.85	149.2	Ari
7 Dez 2017	01h51m21.55s	+16 19' 09.3"	1.8369	0.9916	7.9	136.6	21.6	30.15	257.76	16.09	144.0	Ari
8 Dez 2017	01h51m39.20s	+16 14' 12.6"	1.8373	0.9988	7.9	135.7	22.0	29.53	258.49	16.46	139.0	Ari
9 Dez 2017	01h51m59.02s	+16 09' 30.2"	1.8377	1.0062	7.9	134.7	22.4	28.93	259.20	16.93	134.3	Ari
10 Dez 2017	01h52m21.00s	+16 05' 02.2"	1.8381	1.0137	7.9	133.8	22.8	28.33	259.91	17.51	129.9	Ari
11 Dez 2017	01h52m45.12s	+16 00' 48.6"	1.8386	1.0214	8.0	132.8	23.1	27.73	260.60	18.18	125.8	Ari
12 Dez 2017	01h53m11.38s	+15 56' 49.4"	1.8391	1.0292	8.0	131.9	23.5	27.15	261.29	18.93	122.0	Ari
13 Dez 2017	01h53m39.75s	+15 53' 04.7"	1.8395	1.0371	8.0	131.0	23.8	26.57	261.97	19.74	118.5	Ari
14 Dez 2017	01h54m10.22s	+15 49' 34.4"	1.8401	1.0451	8.1	130.1	24.2	26.00	262.64	20.61	115.3	Ari
15 Dez 2017	01h54m42.77s	+15 46' 18.5"	1.8406	1.0533	8.1	129.2	24.5	25.44	263.30	21.53	112.4	Ari
16 Dez 2017	01h55m17.38s	+15 43' 17.0"	1.8411	1.0616	8.1	128.3	24.8	24.89	263.95	22.49	109.8	Ari
17 Dez 2017	01h55m54.03s	+15 40' 29.8"	1.8417	1.0700	8.1	127.4	25.1	24.34	264.60	23.49	107.4	Ari
18 Dez 2017	01h56m32.70s	+15 37' 56.7"	1.8423	1.0785	8.2	126.5	25.4	23.80	265.24	24.50	105.2	Ari
19 Dez 2017	01h57m13.36s	+15 35' 37.8"	1.8429	1.0872	8.2	125.6	25.7	23.27	265.87	25.54	103.2	Ari
20 Dez 2017	01h57m55.99s	+15 33' 32.8"	1.8435	1.0959	8.2	124.8	26.0	22.74	266.50	26.59	101.4	Ari
21 Dez 2017	01h58m40.56s	+15 31' 41.6"	1.8442	1.1048	8.2	123.9	26.3	22.23	267.12	27.65	99.7	Ari
22 Dez 2017	01h59m27.05s	+15 30' 04.1"	1.8448	1.1137	8.3	123.1	26.5	21.72	267.73	28.71	98.2	Ari
23 Dez 2017	02h00m15.42s	+15 28' 40.1"	1.8455	1.1228	8.3	122.2	26.8	21.22	268.34	29.78	96.8	Ari
24 Dez 2017	02h01m05.64s	+15 27' 29.4"	1.8462	1.1320	8.3	121.4	27.1	20.72	268.94	30.84	95.6	Ari
25 Dez 2017	02h01m57.70s	+15 26' 31.8"	1.8469	1.1412	8.4	120.6	27.3	20.24	269.54	31.90	94.4	Ari
26 Dez 2017	02h02m51.55s	+15 25' 47.0"	1.8477	1.1506	8.4	119.7	27.5	19.76	270.13	32.95	93.3	Ari
27 Dez 2017	02h03m47.16s	+15 25' 15.0"	1.8484	1.1600	8.4	118.9	27.8	19.29	270.71	33.99	92.3	Ari
28 Dez 2017	02h04m44.50s	+15 24' 55.4"	1.8492	1.1695	8.4	118.1	28.0	18.82	271.30	35.03	91.4	Ari
29 Dez 2017	02h05m54.54s	+15 24' 47.9"	1.8500	1.1791	8.5	117.3	28.2	18.37	271.87	36.05	90.6	Ari
30 Dez 2017	02h06m44.25s	+15 24' 52.3"	1.8508	1.1888	8.5	116.6	28.4	17.91	272.44	37.05	89.8	Ari
31 Dez 2017	02h07m46.59s	+15 25' 08.4"	1.8517	1.1986	8.5	115.8	28.6	17.47	273.01	38.05	89.1	Ari
1 Jan 2018	02h08m50.53s	+15 25' 35.9"	1.8525	1.2085	8.5	115.0	28.8	17.03	273.57	39.02	88.4	Ari
2 Jan 2018	02h09m56.04s	+15 26' 14.4"	1.8534	1.2184	8.5	114.2	28.9	16.60	274.14	39.99	87.8	Ari
3 Jan 2018	02h11m03.09s	+15 27' 03.8"	1.8543	1.2284	8.6	113.5	29.1	16.18	274.69	40.93	87.2	Ari
4 Jan 2018	02h12m11.64s	+15 28' 03.7"	1.8552	1.2385	8.6	112.7	29.3	15.76	275.24	41.87	86.7	Ari
5 Jan 2018	02h13m21.68s	+15 29' 13.8"	1.8561	1.2486	8.6	112.0	29.4	15.35	275.79	42.78	86.2	Ari
6 Jan 2018	02h14m33.17s	+15 30' 34.0"	1.8571	1.2589	8.6	111.2	29.6	14.94	276.33	43.69	85.7	Ari
7 Jan 2018	02h15m46.10s	+15 32' 03.9"	1.8580	1.2692	8.7	110.5	29.7	14.55	276.87	44.58	85.3	Ari
8 Jan 2018	02h17m00.43s	+15 33' 43.4"	1.8590	1.2795	8.7	109.8	29.9	14.15	277.41	45.46	84.9	Ari

Ephemeride des Kleinplaneten (7) Iris

Datum	RA	Deklination	r	delta	mag	Elong	Phase	Höhe	Az.	Gesch.	PA	Stb
-----	--	-----	-	-----	---	-----	-----	-----	-----	-----	-----	-----
9 Jan 2018	02h18m16.16s	+15 35' 32.0"	1.8600	1.2900	8.7	109.1	30.0	13.77	277.94	46.33	84.5	Ari
10 Jan 2018	02h19m33.25s	+15 37' 29.7"	1.8611	1.3005	8.7	108.3	30.1	13.39	278.47	47.18	84.2	Ari
11 Jan 2018	02h20m51.68s	+15 39' 36.1"	1.8621	1.3110	8.8	107.6	30.2	13.01	279.00	48.02	83.8	Ari
12 Jan 2018	02h22m11.43s	+15 41' 51.0"	1.8632	1.3216	8.8	106.9	30.3	12.64	279.52	48.84	83.5	Ari
13 Jan 2018	02h23m32.49s	+15 44' 14.2"	1.8642	1.3323	8.8	106.2	30.4	12.28	280.04	49.65	83.2	Ari
14 Jan 2018	02h24m54.82s	+15 46' 45.3"	1.8653	1.3431	8.8	105.5	30.5	11.92	280.56	50.45	83.0	Ari
15 Jan 2018	02h26m18.40s	+15 49' 24.2"	1.8664	1.3539	8.8	104.9	30.6	11.57	281.08	51.23	82.7	Ari
16 Jan 2018	02h27m43.22s	+15 52' 10.6"	1.8676	1.3647	8.9	104.2	30.7	11.23	281.59	51.99	82.5	Ari
17 Jan 2018	02h29m09.25s	+15 55' 04.2"	1.8687	1.3756	8.9	103.5	30.8	10.89	282.10	52.74	82.3	Ari
18 Jan 2018	02h30m36.46s	+15 58' 04.7"	1.8699	1.3866	8.9	102.8	30.9	10.55	282.60	53.48	82.1	Ari
19 Jan 2018	02h32m04.85s	+16 01' 11.9"	1.8711	1.3976	8.9	102.2	30.9	10.22	283.11	54.20	81.9	Ari
20 Jan 2018	02h33m34.38s	+16 04' 25.7"	1.8723	1.4086	8.9	101.5	31.0	9.89	283.61	54.91	81.7	Ari
21 Jan 2018	02h35m05.02s	+16 07' 45.5"	1.8735	1.4197	9.0	100.8	31.1	9.57	284.10	55.60	81.5	Ari
22 Jan 2018	02h36m36.77s	+16 11' 11.4"	1.8747	1.4308	9.0	100.2	31.1	9.26	284.60	56.27	81.4	Ari
23 Jan 2018	02h38m09.59s	+16 14' 42.9"	1.8760	1.4420	9.0	99.6	31.2	8.95	285.09	56.93	81.2	Ari
24 Jan 2018	02h39m43.47s	+16 18' 19.7"	1.8773	1.4532	9.0	98.9	31.2	8.64	285.58	57.57	81.1	Ari
25 Jan 2018	02h41m18.37s	+16 22' 01.8"	1.8785	1.4645	9.0	98.3	31.2	8.34	286.07	58.20	81.0	Ari
26 Jan 2018	02h42m54.29s	+16 25' 48.7"	1.8798	1.4758	9.1	97.6	31.3	8.04	286.56	58.81	80.9	Ari
27 Jan 2018	02h44m31.18s	+16 29' 40.2"	1.8812	1.4871	9.1	97.0	31.3	7.75	287.04	59.40	80.8	Ari
28 Jan 2018	02h46m09.04s	+16 33' 36.1"	1.8825	1.4985	9.1	96.4	31.3	7.46	287.52	59.98	80.7	Ari
29 Jan 2018	02h47m47.84s	+16 37' 36.1"	1.8839	1.5098	9.1	95.8	31.3	7.17	288.00	60.54	80.7	Ari
30 Jan 2018	02h49m27.56s	+16 41' 40.0"	1.8852	1.5213	9.1	95.2	31.4	6.89	288.48	61.09	80.6	Ari
31 Jan 2018	02h51m08.17s	+16 45' 47.4"	1.8866	1.5327	9.2	94.5	31.4	6.62	288.95	61.62	80.5	Ari
1 Feb 2018	02h52m49.67s	+16 49' 58.2"	1.8880	1.5442	9.2	93.9	31.4	6.34	289.42	62.14	80.5	Ari
2 Feb 2018	02h54m32.02s	+16 54' 12.0"	1.8894	1.5558	9.2	93.3	31.4	6.08	289.89	62.65	80.4	Ari
3 Feb 2018	02h56m15.23s	+16 58' 28.8"	1.8909	1.5673	9.2	92.7	31.4	5.81	290.36	63.15	80.4	Ari
4 Feb 2018	02h57m59.27s	+17 02' 48.3"	1.8923	1.5789	9.2	92.1	31.4	5.55	290.83	63.63	80.4	Ari
5 Feb 2018	02h59m44.13s	+17 07' 10.2"	1.8938	1.5905	9.2	91.5	31.4	5.29	291.29	64.11	80.4	Ari
6 Feb 2018	03h01m29.79s	+17 11' 34.3"	1.8953	1.6021	9.3	91.0	31.3	5.04	291.75	64.58	80.4	Ari
7 Feb 2018	03h03m16.25s	+17 16' 00.5"	1.8968	1.6138	9.3	90.4	31.3	4.79	292.21	65.03	80.4	Ari
8 Feb 2018	03h05m03.48s	+17 20' 28.6"	1.8983	1.6255	9.3	89.8	31.3	4.54	292.67	65.48	80.4	Ari
9 Feb 2018	03h06m51.49s	+17 24' 58.2"	1.8998	1.6372	9.3	89.2	31.3	4.29	293.13	65.92	80.4	Ari
10 Feb 2018	03h08m40.25s	+17 29' 29.4"	1.9014	1.6489	9.3	88.6	31.3	4.05	293.58	66.35	80.4	Ari
11 Feb 2018	03h10m29.75s	+17 34' 01.8"	1.9029	1.6607	9.3	88.1	31.2	3.81	294.03	66.77	80.4	Ari
12 Feb 2018	03h12m19.98s	+17 38' 35.2"	1.9045	1.6724	9.4	87.5	31.2	3.58	294.48	67.17	80.4	Ari
13 Feb 2018	03h14m10.93s	+17 43' 09.5"	1.9061	1.6842	9.4	86.9	31.1	3.35	294.93	67.57	80.4	Ari
14 Feb 2018	03h16m02.58s	+17 47' 44.5"	1.9077	1.6960	9.4	86.4	31.1	3.12	295.38	67.96	80.5	Ari
15 Feb 2018	03h17m54.93s	+17 52' 20.0"	1.9093	1.7079	9.4	85.8	31.1	2.89	295.82	68.34	80.5	Ari
16 Feb 2018	03h19m47.95s	+17 56' 55.8"	1.9110	1.7197	9.4	85.2	31.0	2.67	296.26	68.71	80.6	Ari
17 Feb 2018	03h21m41.64s	+18 01' 31.7"	1.9126	1.7316	9.4	84.7	31.0	2.45	296.71	69.08	80.6	Ari
18 Feb 2018	03h23m35.98s	+18 06' 07.5"	1.9143	1.7434	9.5	84.1	30.9	2.23	297.14	69.43	80.7	Ari
19 Feb 2018	03h25m30.95s	+18 10' 43.1"	1.9160	1.7553	9.5	83.6	30.8	2.02	297.58	69.77	80.7	Tau
20 Feb 2018	03h27m26.55s	+18 15' 18.2"	1.9177	1.7672	9.5	83.0	30.8	1.80	298.02	70.10	80.8	Tau
21 Feb 2018	03h29m22.76s	+18 19' 52.7"	1.9194	1.7791	9.5	82.5	30.7	1.59	298.45	70.42	80.8	Tau
22 Feb 2018	03h31m19.56s	+18 24' 26.5"	1.9211	1.7910	9.5	82.0	30.7	1.39	298.88	70.73	80.9	Tau
23 Feb 2018	03h33m16.94s	+18 28' 59.2"	1.9228	1.8029	9.5	81.4	30.6	1.18	299.31	71.03	81.0	Tau
24 Feb 2018	03h35m14.89s	+18 33' 30.8"	1.9246	1.8149	9.5	80.9	30.5	0.98	299.74	71.32	81.1	Tau
25 Feb 2018	03h37m13.38s	+18 38' 01.0"	1.9264	1.8268	9.6	80.4	30.4	0.78	300.17	71.60	81.1	Tau
26 Feb 2018	03h39m12.41s	+18 42' 29.8"	1.9281	1.8387	9.6	79.8	30.4	0.58	300.59	71.88	81.2	Tau
27 Feb 2018	03h41m11.97s	+18 46' 56.8"	1.9299	1.8507	9.6	79.3	30.3	0.38	301.02	72.14	81.3	Tau
28 Feb 2018	03h43m12.03s	+18 51' 22.0"	1.9317	1.8626	9.6	78.8	30.2	0.18	301.44	72.39	81.4	Tau
1 Mar 2018	03h45m12.59s	+18 55' 45.2"	1.9336	1.8745	9.6	78.2	30.1	-0.01	301.86	72.64	81.5	Tau
2 Mar 2018	03h47m13.64s	+19 00' 06.3"	1.9354	1.8865	9.6	77.7	30.0	-0.20	302.28	72.88	81.6	Tau
3 Mar 2018	03h49m15.16s	+19 04' 25.0"	1.9372	1.8984	9.6	77.2	29.9	-0.39	302.69	73.11	81.7	Tau
4 Mar 2018	03h51m17.15s	+19 08' 41.3"	1.9391	1.9104	9.6	76.7	29.8	-0.58	303.11	73.34	81.8	Tau
5 Mar 2018	03h53m19.59s	+19 12' 55.0"	1.9410	1.9223	9.7	76.2	29.7	-0.76	303.52	73.56	81.9	Tau
6 Mar 2018	03h55m22.49s	+19 17' 06.0"	1.9429	1.9343	9.7	75.7	29.6	-0.95	303.93	73.77	82.0	Tau
7 Mar 2018	03h57m25.82s	+19 21' 14.2"	1.9447	1.9462	9.7	75.1	29.5	-1.13	304.35	73.99	82.2	Tau
8 Mar 2018	03h59m29.59s	+19 25' 19.4"	1.9467	1.9582	9.7	74.6	29.4	-1.31	304.76	74.19	82.3	Tau
9 Mar 2018	04h01m33.79s	+19 29' 21.4"	1.9486	1.9701	9.7	74.1	29.3	-1.49	305.16	74.39	82.4	Tau
10 Mar 2018	04h03m38.40s	+19 33' 20.3"	1.9505	1.9821	9.7	73.6	29.2	-1.67	305.57	74.59	82.5	Tau
11 Mar 2018	04h05m43.42s	+19 37' 15.8"	1.9525	1.9940	9.7	73.1	29.1	-1.85	305.98	74.78	82.7	Tau
12 Mar 2018	04h07m48.85s	+19 41' 07.9"	1.9544	2.0059	9.7	72.6	29.0	-2.03	306.38	74.96	82.8	Tau
13 Mar 2018	04h09m54.66s	+19 44' 56.4"	1.9564	2.0179	9.8	72.1	28.9	-2.20	306.78	75.15	82.9	Tau
14 Mar 2018	04h12m00.86s	+19 48' 41.2"	1.9584	2.0298	9.8	71.6	28.8	-2.38	307.18	75.32	83.1	Tau
15 Mar 2018	04h14m07.44s	+19 52' 22.2"	1.9604	2.0417	9.8	71.1	28.7	-2.55	307.58	75.49	83.2	Tau
16 Mar 2018	04h16m14.38s	+19 55' 59.3"	1.9624	2.0536	9.8	70.6	28.6	-2.72	307.98	75.66	83.3	Tau
17 Mar 2018	04h18m21.68s	+19 59' 32.4"	1.9644	2.0655	9.8	70.1	28.4	-2.89	308.38	75.82	83.5	Tau
18 Mar 2018	04h20m29.33s	+20 03' 01.3"	1.9664	2.0774	9.8	69.6	28.3	-3.06	308.77	75.97	83.6	Tau
19 Mar 2018	04h22m37.31s	+20 06' 26.1"	1.9685	2.0893	9.8	69.1	28.2	-3.23	309.17	76.12	83.8	Tau
20 Mar 2018	04h24m45.62s	+20 09' 46.4"	1.9705	2.1012	9.8	68.6	28.1	-3.40	309.56	76.26	83.9	Tau
21 Mar 2018	04h26m54.25s	+20 13' 02.3"	1.9726	2.1130	9.9	68.2	28.0	-3.56	309.95	76.40	84.1	Tau
22 Mar 2018	04h29m03.18s	+20 16' 13.7"	1.9747	2.1249	9.9	67.7	27.8	-3.73	310.34	76.53	84.2	Tau
23 Mar 2018	04h31m12.40s	+20 19' 20.4"	1.9767	2.1367	9.9	67.2	27.7	-3.89	310.73	76.65	84.4	Tau

Ephemeride des Kleinplaneten (7) Iris

Datum	RA	Deklination	r	delta	mag	Elong	Phase	Höhe	Az.	Gesch.	PA	Stb
-----	--	-----	-	-----	---	-----	-----	-----	-----	-----	-----	-----
24 Mar 2018	04h33m21.91s	+20 22' 22.3"	1.9788	2.1485	9.9	66.7	27.6	-4.06	311.12	76.77	84.5	Tau
25 Mar 2018	04h35m31.69s	+20 25' 19.4"	1.9809	2.1603	9.9	66.2	27.4	-4.22	311.51	76.88	84.7	Tau
26 Mar 2018	04h37m41.72s	+20 28' 11.6"	1.9831	2.1720	9.9	65.7	27.3	-4.39	311.89	76.99	84.9	Tau
27 Mar 2018	04h39m52.01s	+20 30' 58.7"	1.9852	2.1838	9.9	65.3	27.2	-4.55	312.28	77.09	85.0	Tau
28 Mar 2018	04h42m02.53s	+20 33' 40.6"	1.9873	2.1955	9.9	64.8	27.0	-4.71	312.66	77.19	85.2	Tau
29 Mar 2018	04h44m13.29s	+20 36' 17.4"	1.9895	2.2072	9.9	64.3	26.9	-4.87	313.04	77.28	85.3	Tau
30 Mar 2018	04h46m24.26s	+20 38' 48.8"	1.9916	2.2189	9.9	63.8	26.7	-5.03	313.43	77.37	85.5	Tau
31 Mar 2018	04h48m35.44s	+20 41' 14.9"	1.9938	2.2306	10.0	63.4	26.6	-5.20	313.81	77.45	85.7	Tau
1 Apr 2018	04h50m46.83s	+20 43' 35.5"	1.9960	2.2423	10.0	62.9	26.5	-5.36	314.19	77.53	85.9	Tau